



## AGRICULTURAL LAND OPPORTUNITY



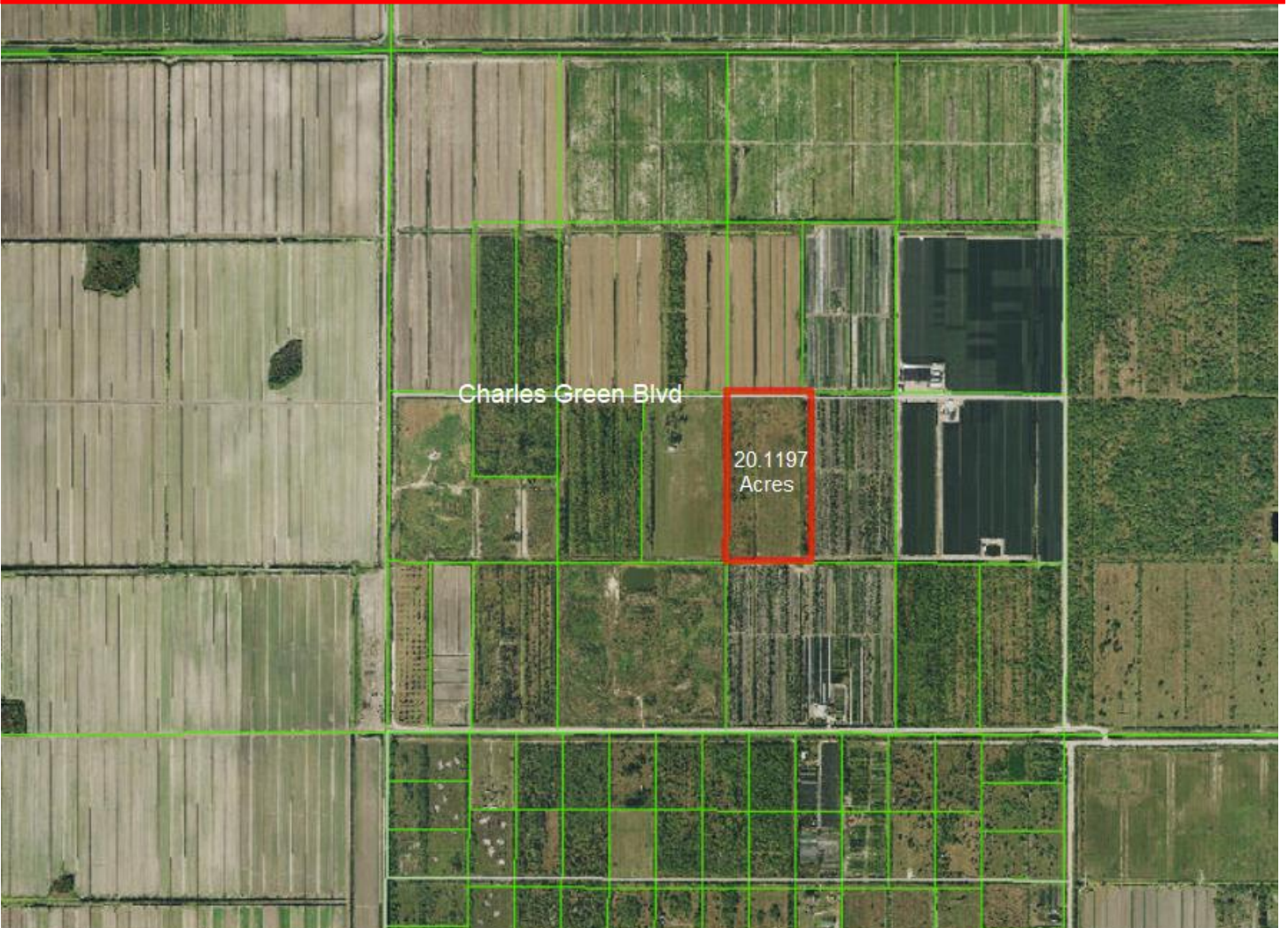
MONOPOLY  
Real Estate Group



## OFFERED FOR SALE

20.1197 +/- Acres | Vacant Agricultural Land

Charles Green Blvd | Loxahatchee, FL | Palm Beach County



Monopoly Real Estate, Inc., is a Licensed Florida Real Estate Broker. We obtained the information above from sources we believe to be reliable. However, we have not verified its accuracy and make no guarantee, warranty or representation about it. It is submitted subject to the possibility of errors, omissions, change of price, rental or other conditions, prior sale, lease or financing, or withdrawal without notice. We include projections, opinions, assumptions or estimates for example only, and they may not represent current or future performance of the property. You and your tax and legal advisors should conduct your own investigation of the property and transaction.

## Motivated Seller

### OFFERING

Palm Beach County, FL, vacant 20.1197- acre agricultural parcel. 70% of the property has been cleared and some irrigation pipes have been layed, but not operational.

Perfect for growing crops, trees, plant nursery, or equestrian.

**ZONING:** AP - Agricultural Production (00-UNINCORPORATED)

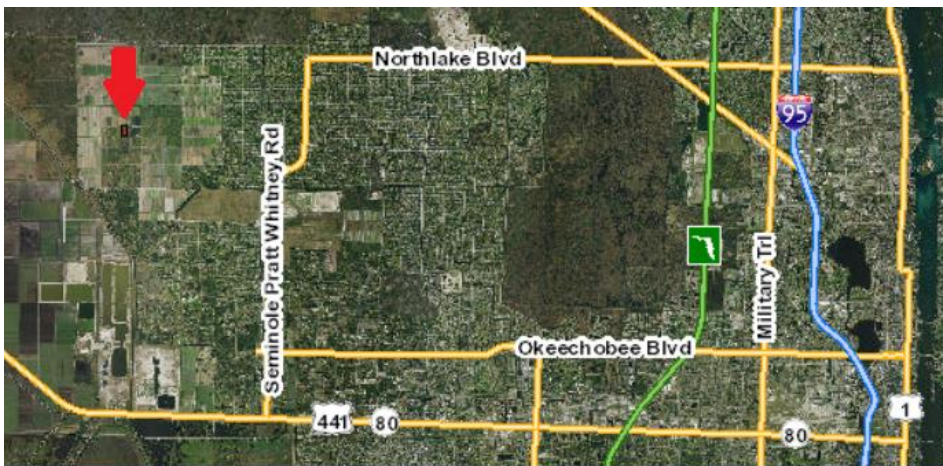
**PRICE:** \$600,000. | \$29,821. Per acre

\$579,000. | \$28,791. Per acre

**\$550,000. | \$27,336. Per acres** *Price Reduced*

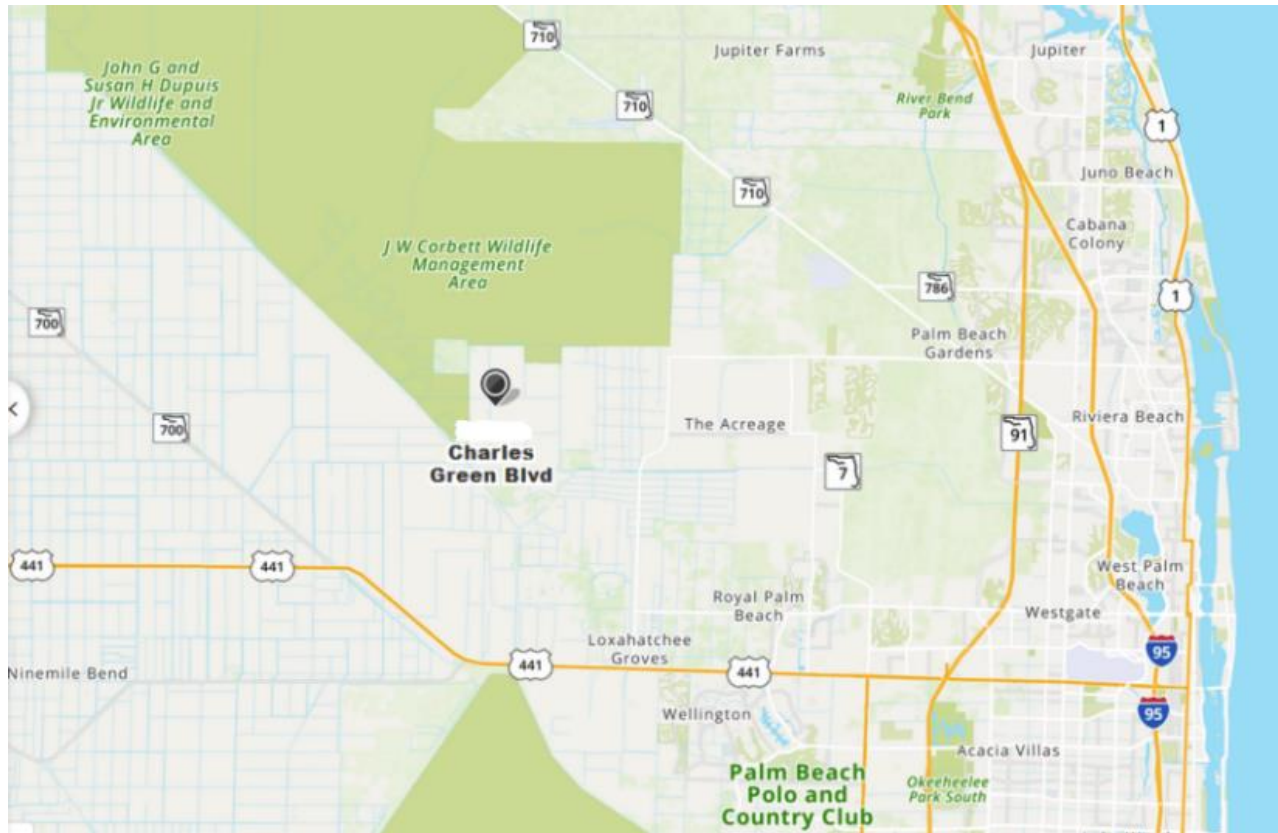
The eastern half of Palm Beach County, there were 39,870 acres of agricultural enterprises in 2007, mostly in or near Boynton Beach, Delray Beach, Boca Raton, Wellington, Jupiter, and Loxahatchee Groves. The sandy soil in this section is used mostly for crops such as bell peppers, cucumbers, eggplant, tomatoes, and Chinese vegetables; plant nurseries; and equestrian (horse) uses.

### LOCATION MAP



Directions: Go West on Orange Blvd (aka 70th Rd N). Continue West onto Louise St. Then North on Legum Lane to Charles Green Blvd on the Left.

Monopoly Real Estate, Inc., is a Licensed Florida Real Estate Broker. We obtained the information above from sources we believe to be reliable. However, we have not verified its accuracy and make no guarantee, warranty or representation about it. It is submitted subject to the possibility of errors, omissions, change of price, rental or other conditions, prior sale, lease or financing, or withdrawal without notice. We include projections, opinions, assumptions or estimates for example only, and they may not represent current or future performance of the property. You and your tax and legal advisors should conduct your own investigation of the property and transaction.



Monopoly Real Estate, Inc., is a Licensed Florida Real Estate Broker. We obtained the information above from sources we believe to be reliable. However, we have not verified its accuracy and make no guarantee, warranty or representation about it. It is submitted subject to the possibility of errors, omissions, change of price, rental or other conditions, prior sale, lease or financing, or withdrawal without notice. We include projections, opinions, assumptions or estimates for example only, and they may not represent current or future performance of the property. You and your tax and legal advisors should conduct your own investigation of the property and transaction.

**PHOTOS**

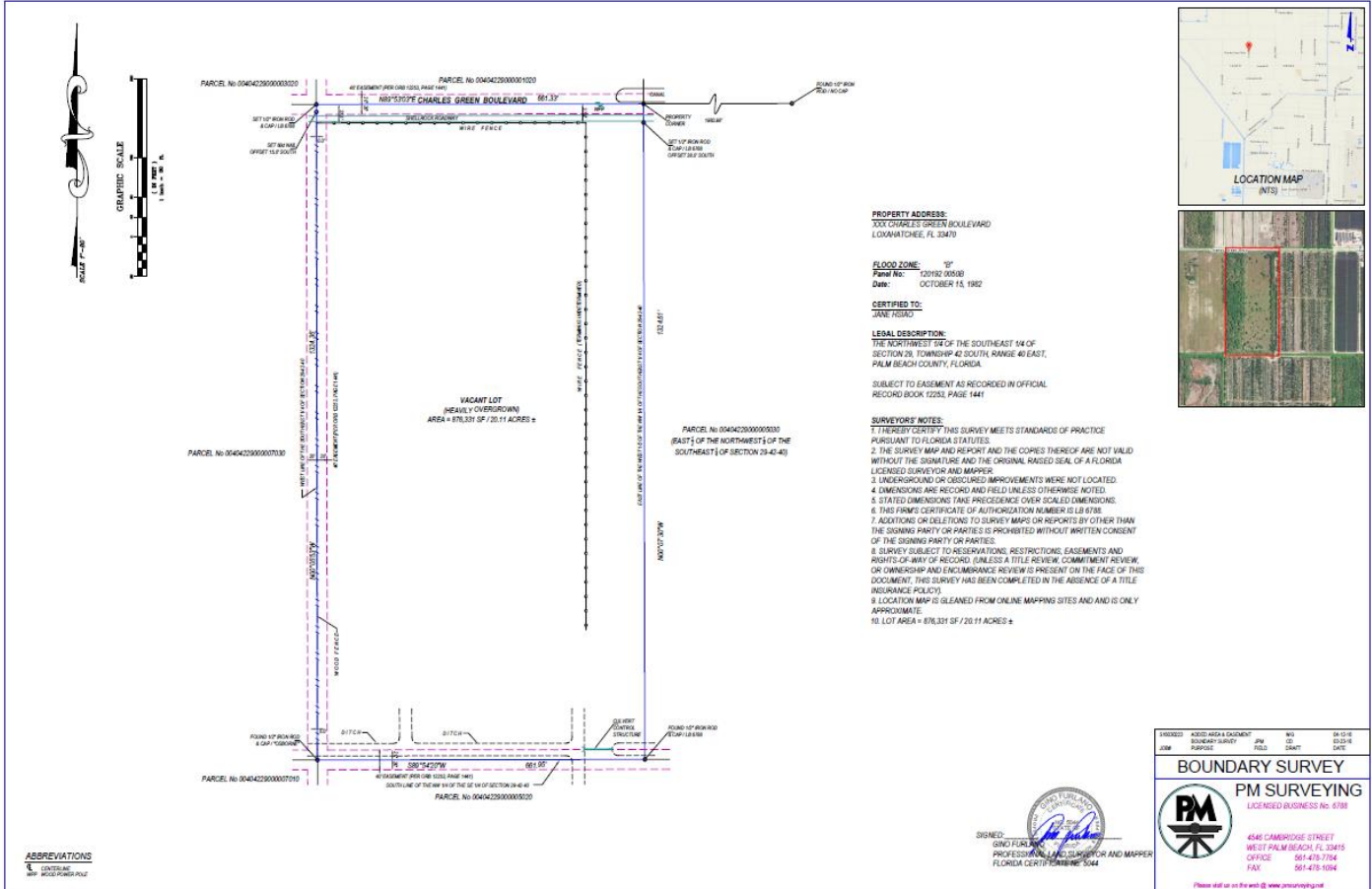


Monopoly Real Estate, Inc., is a Licensed Florida Real Estate Broker. We obtained the information above from sources we believe to be reliable. However, we have not verified its accuracy and make no guarantee, warranty or representation about it. It is submitted subject to the possibility of errors, omissions, change of price, rental or other conditions, prior sale, lease or financing, or withdrawal without notice. We include projections, opinions, assumptions or estimates for example only, and they may not represent current or future performance of the property. You and your tax and legal advisors should conduct your own investigation of the property and transaction.



Monopoly Real Estate, Inc., is a Licensed Florida Real Estate Broker. We obtained the information above from sources we believe to be reliable. However, we have not verified its accuracy and make no guarantee, warranty or representation about it. It is submitted subject to the possibility of errors, omissions, change of price, rental or other conditions, prior sale, lease or financing, or withdrawal without notice. We include projections, opinions, assumptions or estimates for example only, and they may not represent current or future performance of the property. You and your tax and legal advisors should conduct your own investigation of the property and transaction.

# PROPERTY SURVEY



**LEGAL DESCRIPTION:**  
*THE NORTHWEST 1/4 OF THE SOUTHEAST 1/4 OF SECTION 29, TOWNSHIP 42 SOUTH, RANGE 40 EAST, PALM BEACH COUNTY, FLORIDA.*

For additional information, contact exclusive agent:



Simon C. Lipton "Skip"  
President | Broker  
Monopoly Real Estate, Inc.  
Direct: (954) 344-8400  
Cell: (954) 701-9900  
[slipton@monopolygroup.com](mailto:slipton@monopolygroup.com)  
[www.monopolygroup.com](http://www.monopolygroup.com)

[www.monopolygroup.com](http://www.monopolygroup.com)

Monopoly Real Estate, Inc., is a Licensed Florida Real Estate Broker. We obtained the information above from sources we believe to be reliable. However, we have not verified its accuracy and make no guarantee, warranty or representation about it. It is submitted subject to the possibility of errors, omissions, change of price, rental or other conditions, prior sale, lease or financing, or withdrawal without notice. We include projections, opinions, assumptions or estimates for example only, and they may not represent current or future performance of the property. You and your tax and legal advisors should conduct your own investigation of the property and transaction.