



RESIDENTIAL DEVELOPMENT OPPORTUNITY



6.8+/- Acres – Can Build 34 Single-Family Units



Great location | Close to Florida's Turnpike & SR 7/441 | High visibility

6288 Belvedere Road

West Palm Beach, FL 33413

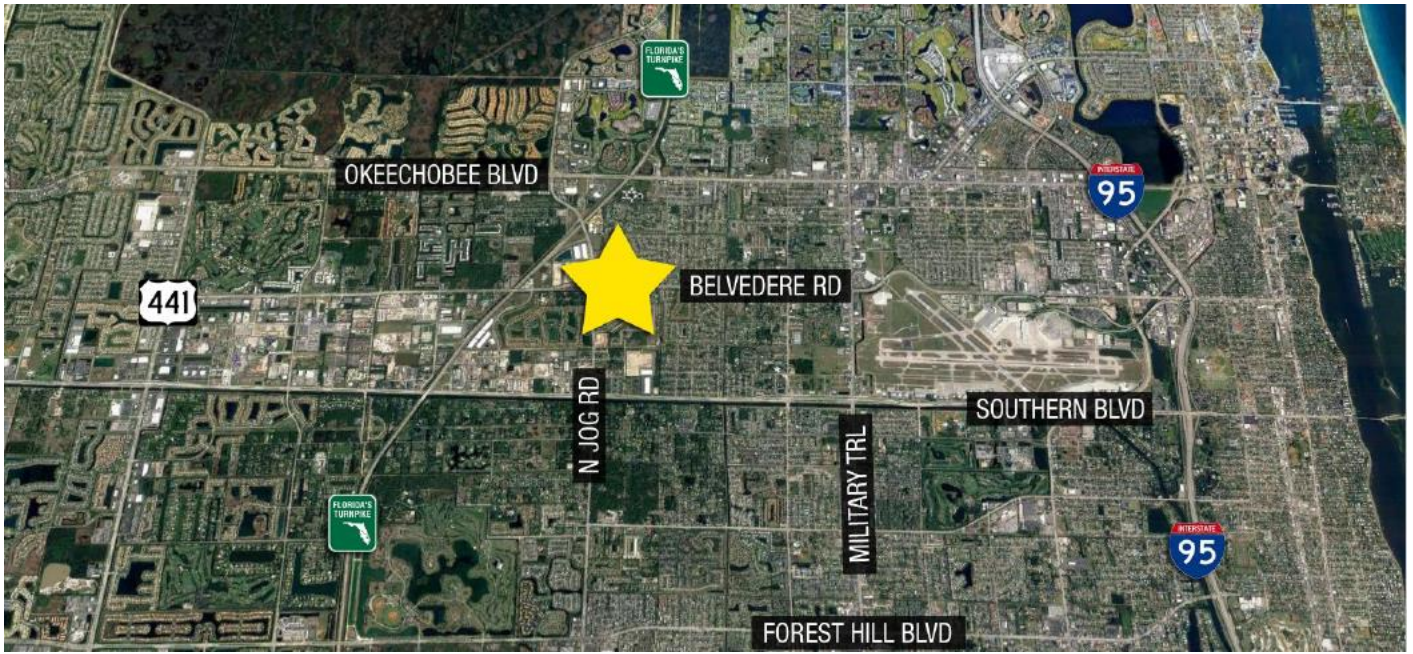
Property Features

- Fantastic development opportunity
- Ideal location close to the Florida Turnpike, I-95, Southern Boulevard and SR 7/441
- ±400' of Belvedere Road frontage
- Several national retailers within 3 mile radius, including: Dick's, Kohl's, Walmart, Home Depot, Publix, CVS and more
- Density MR5 (34 units total)
- Permitted uses include single family, multi-family, rentals, ALF, and condominiums

2018 Demographics

	1 Mile	3 Mile	5 Mile
Population	10,178	91,529	246,927
Households	3,346	34,744	95,282
Median Income	\$46,480	\$41,940	\$43,882

Monopoly Real Estate, Inc.- Licensed Real Estate Broker. No warranty or representation, expressed or implied, is made as to the accuracy of the information contained herein, and same is submitted subject to errors, omissions, change of price, rental or other conditions, withdrawal without notice, and to any special conditions imposed by our principals.



Zoning: AR (agricultural residential) and RS (single family residential)
Density MR5

Sales Price: \$3,500,000

For additional information, contact:



Simon C. Lipton "Skip"
President | Broker
Monopoly Real Estate, Inc.
Direct: (954) 344-8400
Cell: (954) 701-9900
slipton@monopolygroup.com
www.monopolygroup.com

Monopoly Real Estate, Inc.- Licensed Real Estate Broker. No warranty or representation, expressed or implied, is made as to the accuracy of the information contained herein, and same is submitted subject to errors, omissions, change of price, rental or other conditions, withdrawal without notice, and to any special conditions imposed by our principals.