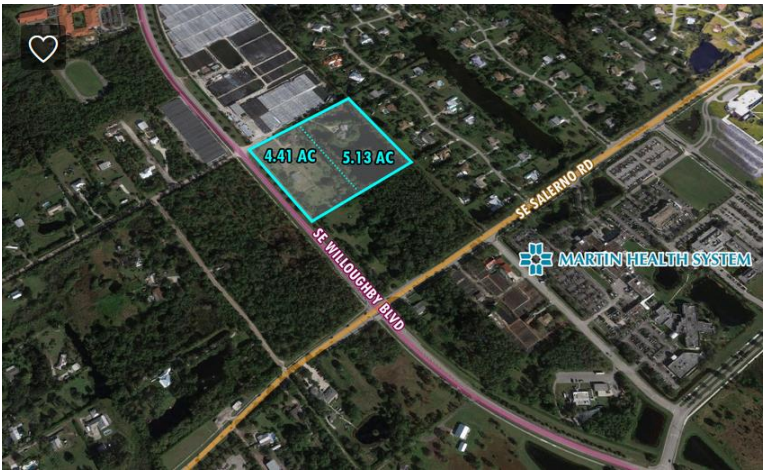




9.54 Acres of Commercial Land
SE Darling Street | Stuart, Florida



DESCRIPTION

Development opportunity in one of Stuart’s growing communities.

*New zoning will allow for 5 units per acre.

Ideal for development of duplexes, single-family homes, multifamily homes, medical, and ALF.

Close proximity to the Cleveland Clinic Martin South Hospital, Indian River State College, and just a few minutes away from US-1 and the I-95 access ramp.

INVESTMENT HIGHLIGHTS

- Close proximity to Hospital
- ALF or Medical Facility potential

Monopoly Real Estate, Inc., is a Licensed Florida Real Estate Broker. We obtained the information above from sources we believe to be reliable. However, we have not verified its accuracy and make no guarantee, warranty or representation about it. It is submitted subject to the possibility of errors, omissions, change of price, rental or other conditions, prior sale, lease or financing, or withdrawal without notice. We include projections, opinions, assumptions or estimates for example only, and they may not represent current or future performance of the property. You and your tax and legal advisors should conduct your own investigation of the property and transaction.

Price	\$1,399,000	Property Subtype	Commercial
Sale Type	Owner User	Proposed Use	Multifamily
Sale Conditions	Build to Suit	Total Lot Size	9.54 AC
No. Lots	1	Opportunity Zone	No
Property Type	Land		

For additional information, contact:



Simon C. Lipton "Skip"
President | Broker
Monopoly Real Estate, Inc.
Direct: (954) 344-8400
Cell: (954) 701-9900
slipton@monopolygroup.com
www.monopolygroup.com

Monopoly Real Estate, Inc., is a Licensed Florida Real Estate Broker. We obtained the information above from sources we believe to be reliable. However, we have not verified its accuracy and make no guarantee, warranty or representation about it. It is submitted subject to the possibility of errors, omissions, change of price, rental or other conditions, prior sale, lease or financing, or withdrawal without notice. We include projections, opinions, assumptions or estimates for example only, and they may not represent current or future performance of the property. You and your tax and legal advisors should conduct your own investigation of the property and transaction.